



Providing Treatment Solutions for Air, Water, & Land

[www.TheiaLLC.com](http://www.TheiaLLC.com)

(888)330-2260

## Local Company– World Class Capabilities



We offer a wide range of carbon vessels. We offer standard designs as well as customized designs to meet your application. We provide stand alone carbon units or full treatment systems. We also provide a wide range of treatment media.

[www.theiaair.com](http://www.theiaair.com)

[www.theiawater.com](http://www.theiawater.com)

[www.theialand.com](http://www.theialand.com)





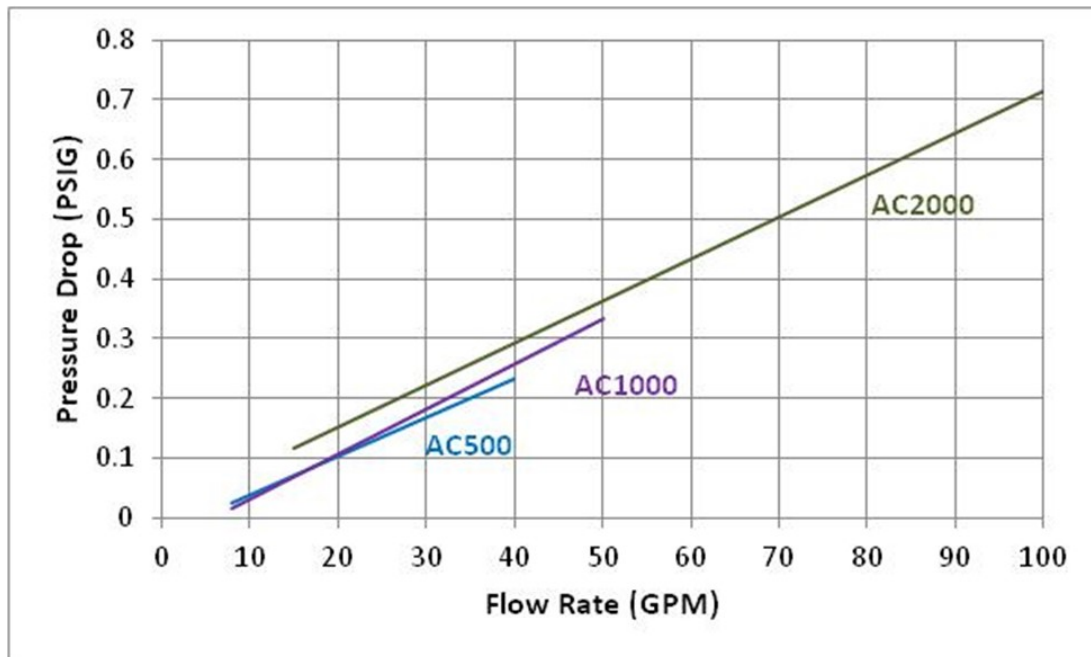
# AC Series Carbon Vessels

## Low Profile Vessels

AC Series Carbon Vessels are heavy duty vessels which are designed to be used in the field or placed inside trailers. They feature an inverted internal dish on the bottom to allow the vessel to be lower to the ground. This is done without sacrificing performance or the ability to backwash the vessels with full bed expansion.

### Features and Benefits

- Pressure rated for 50 PSIG (minimum)
- Full dished head on bottom
- Epoxy coated for longer life
- Set up for backwash
- Small space requirement
- Top Manway for easy access
- Units handle up to 100 GPM
- Forklift channels and Lifting Lugs for ease of handling
- Low profile more stable for field applications
- Low profile for installation inside trailers or containers



| Model number                      | AC500  | AC1000  | AC2000  |
|-----------------------------------|--------|---------|---------|
| Carbon/media fill Cubic Ft/pounds | 18/500 | 36/1000 | 72/2000 |
| Recommended Flow Rate             | 25     | 50      | 100     |
| Weight—empty                      | 500    | 800     | 1000    |
| Weight Operating                  |        |         |         |





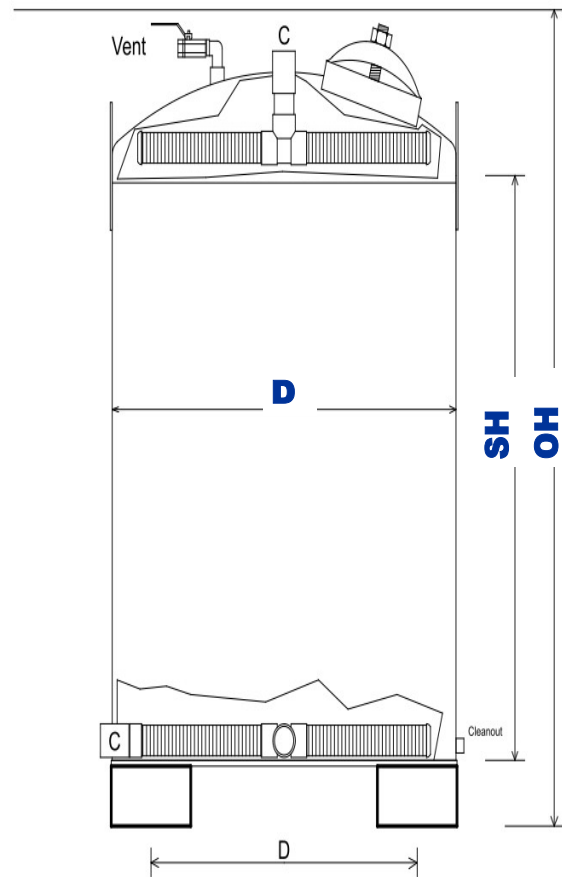
# AC Series Carbon Vessels

## Low Profile Vessels

Option :

- Any liquid Phase Media
- Clay
- Zeolite
- Metals media
- Arsenic media
- Neutralization media

- Stainless Steel Construction
- Higher Pressure Ratings
- Camlock connections
- Interconnection Kit
- Pressure Gauges/switches
- Backwash System



| Model number                     | AC500 | AC1000 | AC2000 |
|----------------------------------|-------|--------|--------|
| Diameter D ( Inches)             | 36    | 42     | 48     |
| Straight Side Height SH (inches) | 48    | 64     | 76     |
| Overall Height OH (inches)       | 56    | 72     | 84     |
| Inlet/Outlet – FNPT (inches)     | 2     | 2      | 3      |





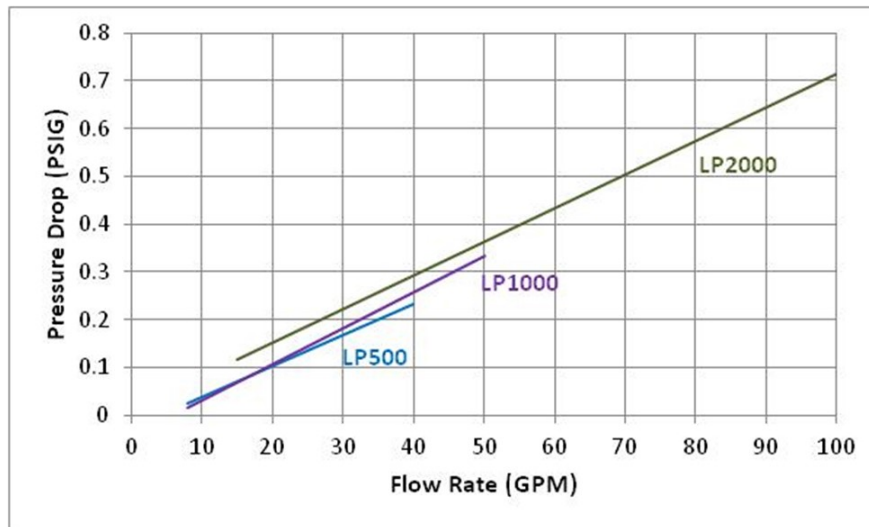
# LP Series Carbon Vessels Process Series

LP Series Carbon Vessels are slightly more heavy duty vessels which are designed to be used with more permanent installations. Although they are fully portable, their higher profile makes them less attractive than our AC series for installation inside trailers or on uneven ground.

They feature an normal dished bottom with full drainage capability. Higher internal volume allows for an easier

### Features and Benefits

- Pressure rated for 75 PSIG
- Full dished head on bottom
- Epoxy coated for longer life
- Set up for backwash
- Small space requirement
- Top Manway for easy access
- Units handle up to 100 GPM
- Forklift channels and Lifting Lugs for ease of handling
- Traditional dished bottom for full draining of the unit
- Higher internal volume allows for better backwash



| Model number                      | LP500  | LP1000  | LP2000  |
|-----------------------------------|--------|---------|---------|
| Carbon/media fill Cubic Ft/pounds | 18/500 | 36/1000 | 72/2000 |
| Recommended Flow Rate             | 25     | 50      | 100     |
| Weight—empty                      | 500    | 800     | 1000    |
| Weight Operating                  |        |         |         |



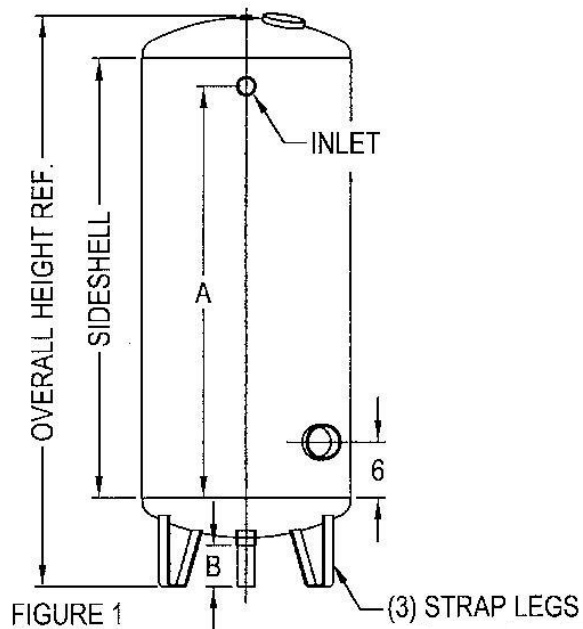
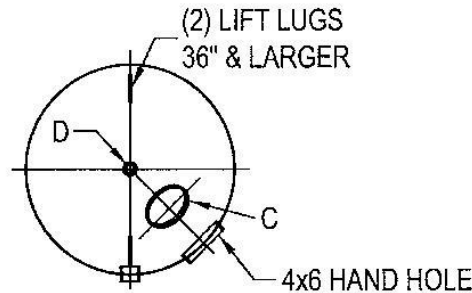


# LP Series Carbon Vessels Process Series

Option:

- Any liquid Phase Media
- Clay
- Zeolite
- Metals media
- Arsenic media
- Neutralization media

- Stainless Steel Construction
- Higher Pressure Ratings
- Camlock connections
- Interconnection Kit
- Pressure Gauges/switches
- Backwash System



| Model number                     | LP500 | LP1000 | LP2000 |
|----------------------------------|-------|--------|--------|
| Diameter D ( Inches)             | 36    | 42     | 48     |
| Straight Side Height SH (inches) | 48    | 64     | 76     |
| Overall Height OH (inches)       | 74    | 76     | 100    |
| Inlet/Outlet - FNPT (inches)     | 2     | 2      | 2      |





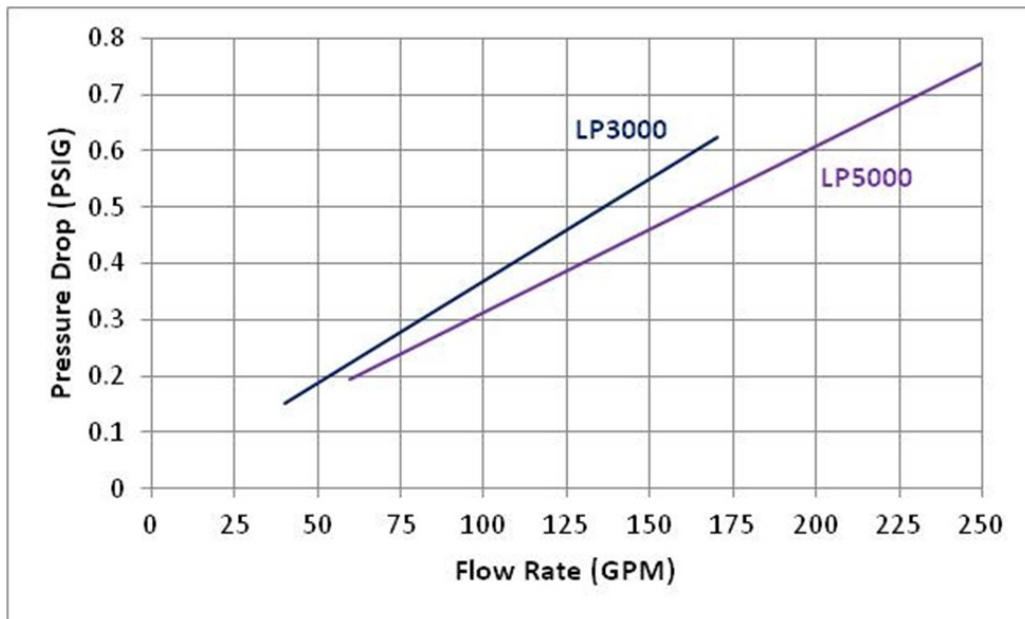
# LP Series Carbon Vessels Process Series

LP Series Carbon Vessels are slightly more heavy duty vessels which are designed to be used with more permanent installations. Although they are fully portable, their higher profile makes them less attractive than our AC series for installation inside trailers or on uneven ground.

They feature an normal dished bottom with full drainage capability. Higher internal volume allows for an easier backwash.

### Features and Benefits

- Pressure rated for 75 PSIG
- Full dished head on bottom
- Epoxy coated for longer life
- Set up for backwash
- Small space requirement
- Top Manway for easy access
- Units handle up to 100 GPM
- Forklift channels and Lifting Lugs for ease of handling
- Traditional dished bottom for full draining of the unit
- Higher internal volume allows for better backwash



| Model number                      | LP3000   | LP5000   |
|-----------------------------------|----------|----------|
| Carbon/media fill Cubic Ft/pounds | 100/3000 | 170/5000 |
| Recommended Flow Rate             | 150      | 250      |
| Weight—empty                      | 1200     | 1900     |
| Weight Operating                  | 11,000   | 17,000   |





# LP Series Carbon Vessels Process Series

Option

Any Liquid Phase Media

Clay

Zeolite

Metals media

Arsenic media

Neutralization media

Stainless Steel Construction

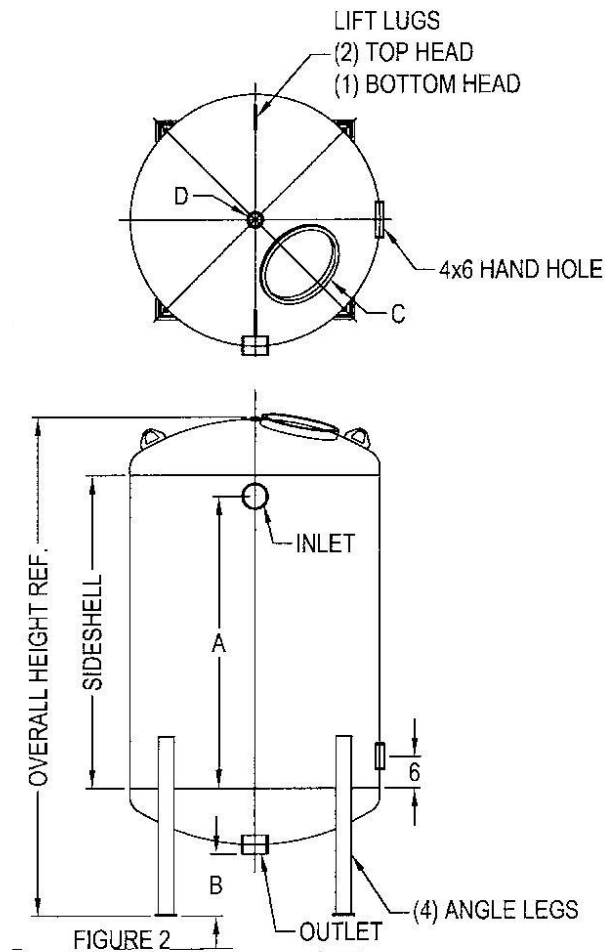
Higher Pressure Ratings

Camlock connections

Interconnection Kit

Pressure Gauges/switches

Backwash System

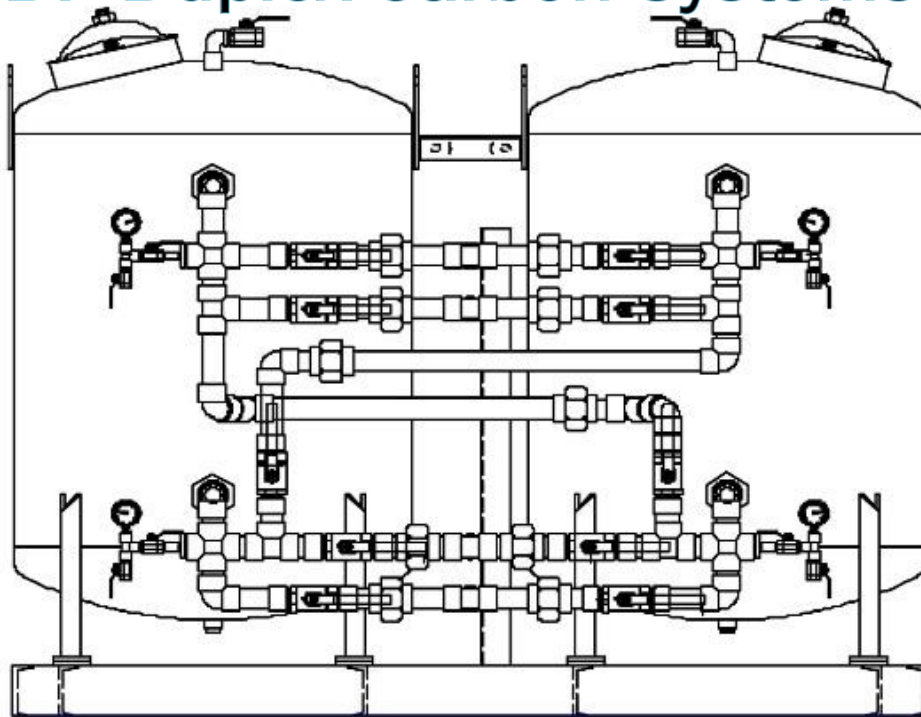


| Model number                     | LP3000 | LP5000 |
|----------------------------------|--------|--------|
| Diameter D ( Inches)             | 60     | 72     |
| Straight Side Height SH (inches) | 72     | 72     |
| Overall Height OH (inches)       | 107    | 119    |
| Inlet/Outlet - FNPT (inches)     | 3      | 4      |





## DP Duplex Carbon Systems



The DP series consists of a pair of our LP or AC series vessels, skid mounted with a full manifold. Manifold allows for a single inlet and outlet for two ( or more) vessels. The System can operate with either vessel in lead or lag, and can isolate either vessel for change out or backwash.

System is designed for manual operation or can be fully automated using pneumatic or electric actuators.

